

A PLAT OF FAIRVIEW FOREST APARTMENTS

BEING A PORTION OF THE WEST HALF OF SECTION 9, TOWNSHIP 38 SOUTH, RANGE 41 EAST CITY OF STUART, MARTIN COUNTY, FLORIDA

SURVEY NOTES

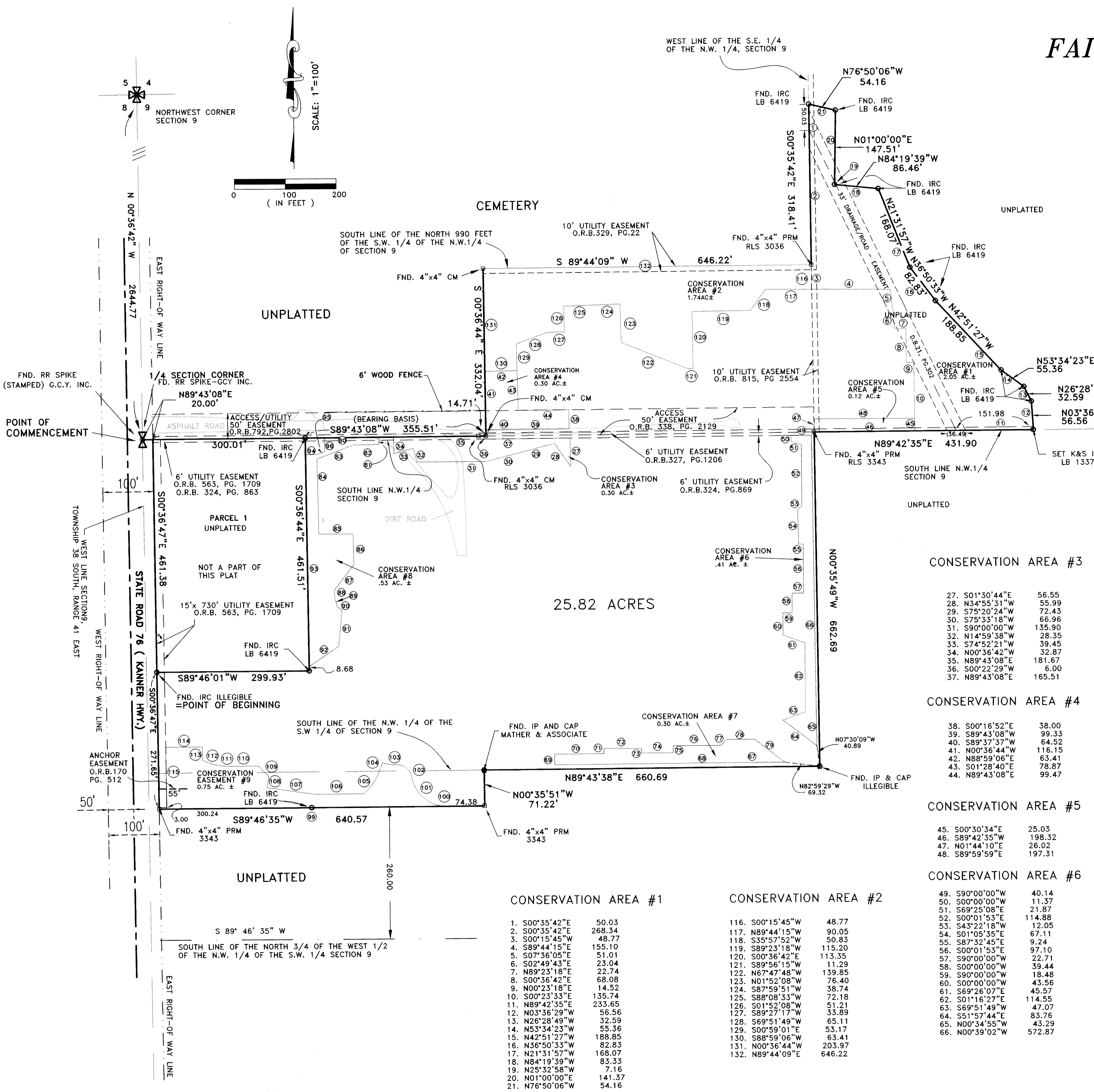
- BEARINGS HEREON ARE BASED ON THE EAST - WEST QUARTER LINE OF SECTION 9, TOWNSHIP 38 SOUTH, RANGE 41 EAST, HAVING AN ASSUMED BEARING OF NORTH 89° 43' 08" EAST
- UNDERGROUND ENCROACHMENTS AND UTILITIES, IF ANY, WERE NOT LOCATED
- NOTE: THIS PLAT AS RECORDED IN ITS GRAPHIC FORM, IS THE OFFICIAL DEPICTION OF THE SUBDIVIDED LANDS DESCRIBED HEREIN AND WILL IN NO CIRCUMSTANCES BE SUPPLANTED IN AUTHORITY BY ANY OTHER GRAPHIC OR DIGITAL FORM OF THE PLAT. THERE MAY BE ADDITIONAL RESTRICTIONS THAT ARE NOT RECORDED ON THIS PLAT THAT MAY BE FOUND IN THE PUBLIC RECORDS OF THIS COUNTY

LEGEND

- PERMANENT REFERENCE MONUMENT
- IRON ROD & CAP
- CONCRETE MONUMENT
- ⊙ IRON PIPE & CAP (IP & C)

ABBREVIATION

- | | |
|--------|---|
| FND. | FOUND |
| PRM | PERMANENT REFERENCE MONUMENT (CONCRETE) |
| IP | IRON PIPE |
| IRC | IRON ROD AND CAP |
| CM | CONCRETE MONUMENT |
| O.R.B. | OFFICIAL RECORD BOOK |
| PG. | PAGE |
| POB | POINT OF BEGINNING |
| POC | POINT OF COMMENCEMENT |
| DB | DEED BOOK |



CONSERVATION AREA #3

27. S01°30'44"E	56.55
28. N34°55'31"W	55.99
29. S75°20'24"W	72.43
30. S75°33'18"W	66.96
31. S90°00'00"W	135.90
32. N14°59'38"W	28.35
33. S74°52'21"W	39.45
34. N00°36'42"W	32.87
35. N89°43'08"E	181.67
36. S00°22'29"W	6.00
37. N89°43'08"E	165.51

CONSERVATION AREA #4

38. S00°16'52"E	38.00
39. S89°43'08"W	99.33
40. S89°37'37"W	64.52
41. N00°36'44"W	116.15
42. N88°59'06"E	63.41
43. S01°28'40"E	78.87
44. N89°43'08"E	99.47

CONSERVATION AREA #5

45. S00°30'34"E	25.03
46. S89°42'35"W	198.32
47. N01°44'10"E	26.02
48. S89°59'59"E	197.31

CONSERVATION AREA #6

49. S90°00'00"W	40.14
50. S00°00'00"W	11.37
51. S69°25'08"E	21.87
52. S00°01'53"E	114.88
53. S43°22'18"W	12.05
54. S01°05'35"E	67.11
55. S87°32'45"E	9.24
56. S00°01'53"E	97.10
57. S90°00'00"W	22.71
58. S00°00'00"W	39.44
59. S90°00'00"W	18.48
60. S00°00'00"W	43.56
61. S69°26'07"E	45.57
62. S01°16'27"E	114.55
63. S69°51'49"W	47.07
64. S51°57'44"E	83.76
65. N00°34'55"W	43.29
66. N00°39'02"W	572.87

CONSERVATION AREA #7

67. S89°56'27"W	58.65
68. S89°43'46"W	394.59
69. N00°16'27"W	20.97
70. N89°43'33"E	96.89
71. N04°26'08"E	10.54
72. S89°23'44"E	73.83
73. S00°16'27"E	9.37
74. N89°38'26"E	62.31
75. N00°01'53"W	13.93
76. N89°58'07"E	94.34
77. N44°53'09"E	16.70
78. S90°00'00"E	54.68
79. S51°50'46"E	74.58

CONSERVATION AREA #8

80. N89°43'08"E	106.87
81. S00°05'38"E	14.40
82. S89°23'18"W	50.32
83. S68°47'10"W	77.03
84. S01°06'36"E	148.41
85. S90°00'00"E	67.27
86. S00°56'23"E	61.10
87. S37°22'43"W	61.50
88. S00°36'42"E	11.49
89. S14°47'44"E	21.24
90. S52°37'17"E	11.40
91. S05°37'29"W	71.16
92. S55°48'38"W	70.66
93. N00°36'44"W	419.82
94. S90°00'00"E	22.35
95. N89°07'50"E	16.49
96. N00°00'00"E	27.50

CONSERVATION AREA #9

99. N89°46'35"E	546.33
100. RADIUS=70.00	ARC=72.99
DELTA=59°44'42"	CHORD DIST=69.73
CHORD BEARING=N60°05'52"W	
101. RADIUS=70.00	ARC=25.22
DELTA=20°38'28"	CHORD DIST=25.08
CHORD BEARING=N19°54'09"W	
102. RADIUS=30.00	ARC=44.25
DELTA=84°31'14"	CHORD DIST=40.35
CHORD BEARING=N51°50'48"W	
103. RADIUS=55.00	ARC=25.94
DELTA=27°01'21"	CHORD DIST=25.70
CHORD BEARING=N80°36'08"W	
104. S22°54'25"W	12.43
105. RADIUS=102.00	ARC=60.99
DELTA=34°15'44"	CHORD DIST=60.09
CHORD BEARING=S33°24'16"W	
106. S89°46'35"W	95.78
107. N81°43'52"W	94.61
108. N08°16'08"E	22.79
109. N43°27'23"W	28.28
110. S89°46'35"W	5.41
111. S89°46'35"W	52.50
112. RADIUS=117.95	ARC=54.50
DELTA=26°28'33"	CHORD DIST=54.02
CHORD BEARING=N76°59'13"W	
113. N00°32'31"W	26.35
114. S90°00'00"W	72.32
115. S00°18'36"E	122.71

CONSERVATION AREA #1

1. S00°35'42"E	50.03
2. S00°35'42"E	268.34
3. S00°15'45"W	48.77
4. S89°44'15"E	155.10
5. S07°36'05"E	51.01
6. S02°49'43"E	23.04
7. N89°23'18"E	22.74
8. S00°36'42"E	68.08
9. N00°23'18"E	14.52
10. S00°23'33"E	135.74
11. N89°42'35"E	233.65
12. N03°36'29"W	56.56
13. N26°28'49"W	32.59
14. N53°34'23"W	55.36
15. N42°51'27"W	188.85
16. N36°50'33"W	82.83
17. N21°31'57"W	168.07
18. N84°19'39"W	83.33
19. N25°32'58"W	7.16
20. N01°00'00"E	141.37
21. N76°50'06"W	54.16

CONSERVATION AREA #2

116. S00°15'45"W	48.77
117. N89°44'15"W	90.05
118. S35°57'52"W	50.83
119. S89°23'18"W	115.20
120. S00°36'42"E	113.35
121. S89°56'15"W	11.29
122. N67°47'48"W	139.85
123. N01°52'08"W	76.40
124. S87°59'51"W	38.74
125. S88°08'33"W	72.18
126. S01°52'08"W	51.21
127. S89°27'17"W	33.89
128. S69°51'49"W	65.11
129. S00°59'01"E	53.17
130. S88°59'06"W	63.41
131. N00°36'44"W	203.97
132. N89°44'09"E	646.22

Keith & Schnars, P.A.
ENGINEERS - PLANNERS - SURVEYORS

101 S.W. FLAGLER AVENUE
STUART, FLORIDA 34994
(861) 287-2626

SHEET 2 OF 2
PLAT OF
FAIRVIEW FOREST APARTMENTS

C:\WF\116\FAIRVIEW\PLAT\PREP\REV1_12_99.dwg Med Nov 17 06:50:33 1999 This Plot was created by Sam Cauley